



# MCAS 2014

Andover  
Public  
Schools

# 2014 ELA RESULTS

Andover 2013 and 2014 ELA MCAS Performance Ratings by %

	Grade 3		Grade 4		Grade 5		Grade 6		Grade 7		Grade 8		Grade 10	
	2013	2014	2013	2014	2013	2014	2013	2014	2013	2014	2013	2014	2013	2014
<b>#</b>	471	523	525	480	517	491	513	466	483	522	549	404	437	450
<b>A</b>	16	21	20	19	28	33	35	27	32	29	43	26	70	63
<b>P</b>	58	54	56	52	54	51	51	55	60	61	51	69	28	34
<b>NI</b>	24	22	21	25	15	13	10	14	7	7	4	4	1	1
<b>W/F</b>	2	3	3	4	3	3	4	4	1	3	2	1	1	2

# COHORT VIEW - ELA

	<i>English Language Arts Cohort Group by % 2007 – 2014</i>						
	<b>2007</b>	<b>2008</b>	<b>2009</b>	<b>2010</b>	<b>2011</b>	<b>2012</b>	<b>2014</b>
	<b>G3</b>	<b>G4</b>	<b>G5</b>	<b>G6</b>	<b>G7</b>	<b>G8</b>	<b>G10</b>
<b>A</b>	22	16	33	36	34	41	63
<b>P</b>	53	59	52	53	57	55	34
<b>NI</b>	22	21	12	9	7	2	1
<b>W/F</b>	4	3	2	2	2	2	2

# 2014 MATH RESULTS

## Andover 2013 and 2014 Math MCAS Performance Ratings

	Grade 3		Grade 4		Grade 5		Grade 6		Grade 7		Grade 8		Grade 10	
	2013	2014	2013	2014	2013	2014	2013	2014	2013	2014	2013	2014	2013	2014
<b>#</b>	471	519	530	398	517	486	515	462	488	471	547	437	437	452
<b>A</b>	45	45	32	34	49	54	46	45	36	28	42	31	82	77
<b>P</b>	33	37	42	35	34	30	34	31	39	45	35	42	14	15
<b>NI</b>	18	14	24	26	13	12	14	18	18	18	16	18	3	6
<b>W/F</b>	4	4	2	5	4	5	6	7	7	8	7	8	2	2

# COHORT VIEW - MATH

	<i>Math Cohort Group 2007 - 2014</i>						
	<b>2007</b>	<b>2008</b>	<b>2009</b>	<b>2010</b>	<b>2011</b>	<b>2012</b>	<b>2014</b>
	<b>G3</b>	<b>G4</b>	<b>G5</b>	<b>G6</b>	<b>G7</b>	<b>G8</b>	<b>G10</b>
<b>A</b>	32	30	45	49	38	45	77
<b>P</b>	42	36	36	28	35	31	15
<b>NI</b>	19	29	14	17	19	17	6
<b>W/F</b>	7	5	5	6	8	6	2

# 2014 SCIENCE RESULTS

## Andover 2013 and 2014 Science/Engineering MCAS Performance Ratings

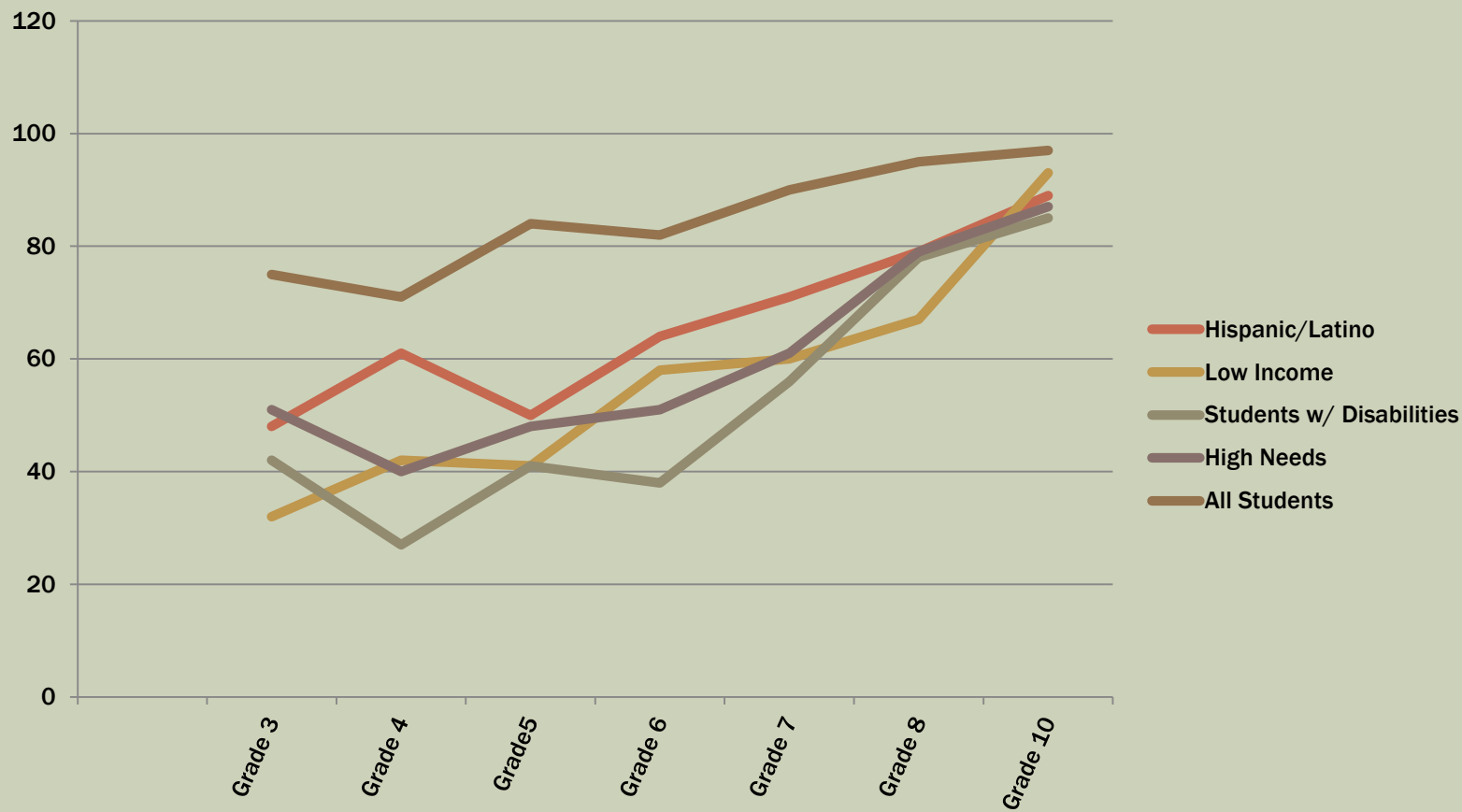
	Grade 5		Grade 8		HS Intro Physics		HS Biology	
	2013	2014	2013	2014	2013	2014	2013	2014
<b>#</b>	517	533	547	480	443	480	11	*
<b>A</b>	45	40	13	6	40	35	9	
<b>P</b>	31	36	55	53	44	48	45	
<b>NI</b>	17	20	27	35	16	16	18	
<b>W/F</b>	6	4	4	5	0	1	27	



# ANNUAL PROGRESS AND PERFORMANCE INDEX

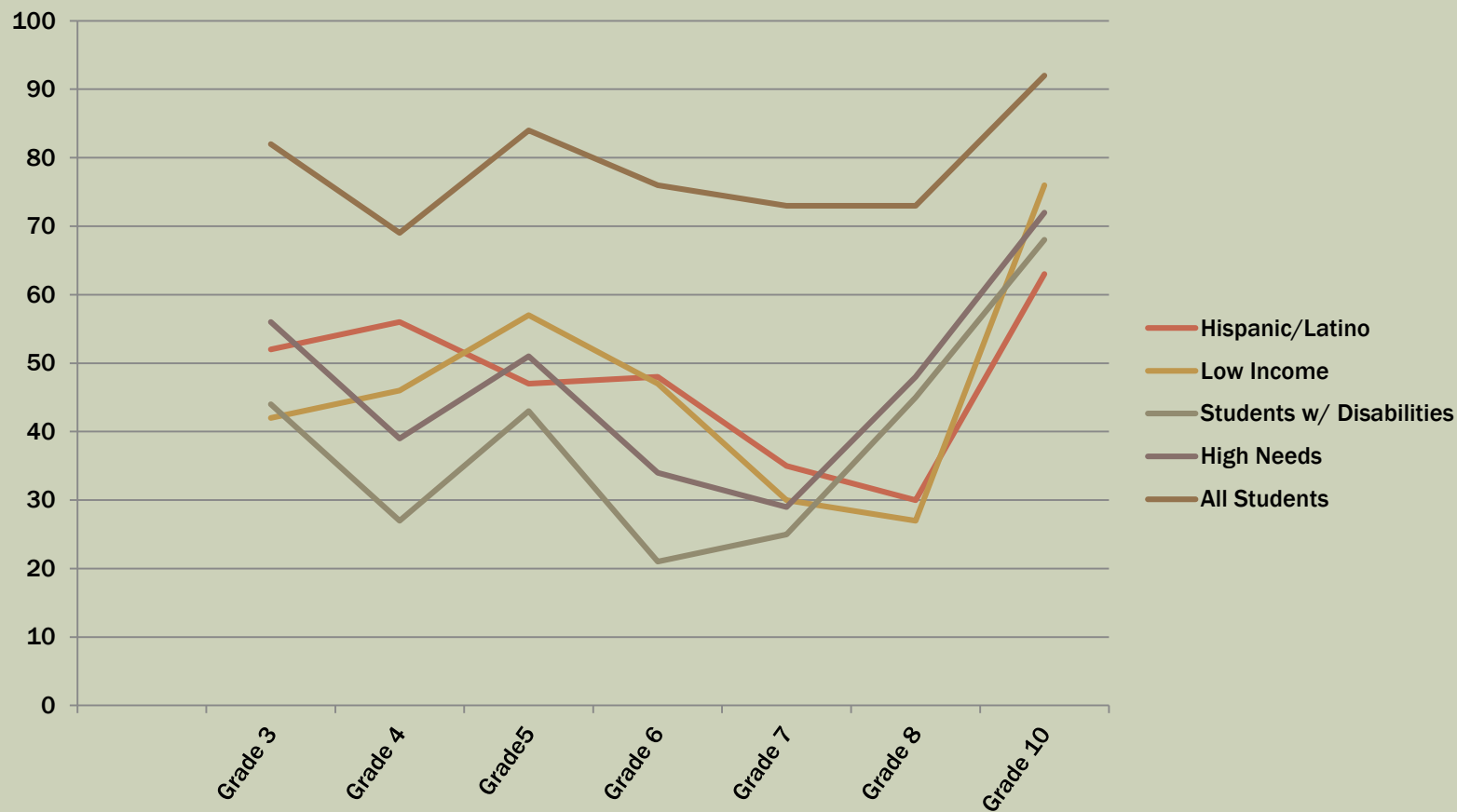
- **District Accountability**
  - All students
  - Subgroups (minimum size requirement > 30 students)
- **Seven Core Indicators**
  - Narrowing proficiency gaps in ELA, Math, Science
  - Growth in ELA and Math
  - Cohort Graduation Rates – on or above target
  - Cohort Dropout rates – on or above target

# 2014 DISTRICT-WIDE ELA ADVANCED/PROFICIENT SUB GROUP COMPARISONS BY GRADE





# 2014 DISTRICT-WIDE MATH ADVANCED/PROFICIENT SUB GROUP COMPARISONS BY GRADE



# NEXT STEPS

- Analyze student results in ELA at the early grades.
  - Align classroom assessments to standards and expectations (writing and reading)
  - Strengthen our tiered-instruction model that meets the needs of all students
- Monitor the implementation of the Math In Focus Program
  - Collect base-line assessment data from which to draw comparisons and make adjustments
- Utilize the science results as one data point in the science program review process



# DISTRICT INITIATIVES

- Year 1 of the implementation of the Math In Focus Program
  - A 3-year professional development plan
- Appointment of a PK – 5 Literacy Coordinator
- RETELL courses for teachers and administrators
- Year two of the science program review
- Development of strong assessment practices to include analysis of student data
- Early release day program
- Title I Program for both reading and mathematics