

# MSBA Enrollment Review – Andover, MA

## Historic Enrollment Data (DESE)

YEAR	PK	K	1	2	3	4	5	6	7	8	9	10	11	12	K-12	K-5	6-8	9-12
1993-94	27	418	430	449	460	455	442	419	397	384	328	355	290	279	5,106	2,654	1,200	1,252
1994-95	31	419	464	445	462	463	468	445	425	398	329	319	332	278	5,247	2,721	1,268	1,258
1995-96	41	428	460	488	466	473	727	442	416	212	347	320	312	320	5,411	3,042	1,070	1,299
1996-97	31	425	473	462	486	463	478	468	458	434	368	338	312	292	5,457	2,787	1,360	1,310
1997-98	39	387	458	478	481	501	469	469	473	461	388	359	339	311	5,574	2,774	1,403	1,397
1998-99	36	413	446	475	482	504	503	460	469	466	414	385	350	331	5,698	2,823	1,395	1,480
1999-00	27	397	460	460	482	487	503	501	471	461	419	407	389	344	5,781	2,789	1,433	1,559
2000-01	32	425	422	476	463	486	504	495	504	472	445	395	405	381	5,873	2,776	1,471	1,626
2001-02	35	383	458	427	478	468	482	497	514	497	421	407	383	397	5,812	2,696	1,508	1,608
2002-03	39	415	435	470	446	489	477	478	507	512	472	386	408	381	5,876	2,732	1,497	1,647
2003-04	62	409	425	438	482	461	493	476	478	503	468	464	375	405	5,877	2,708	1,457	1,712
2004-05	71	441	436	442	448	480	468	481	478	483	470	444	456	358	5,885	2,715	1,442	1,728
2005-06	54	407	475	452	455	467	494	465	484	484	423	469	445	441	5,961	2,750	1,433	1,778
2006-07	71	403	423	488	469	474	466	499	469	490	452	410	456	427	5,926	2,723	1,458	1,745
2007-08	84	418	453	455	502	485	487	476	519	476	454	446	402	432	6,005	2,800	1,471	1,734
2008-09	75	448	447	456	467	507	493	491	494	526	450	443	436	390	6,048	2,818	1,511	1,719
2009-10	78	397	464	474	486	469	515	497	492	492	490	441	442	426	6,085	2,805	1,481	1,799
2010-11	66	435	426	478	497	493	472	520	507	482	460	470	440	432	6,112	2,801	1,509	1,802
2011-12	70	391	467	453	512	507	507	471	523	514	448	450	462	424	6,129	2,837	1,508	1,784
2012-13	73	370	441	503	469	528	512	514	479	537	466	433	440	453	6,145	2,823	1,530	1,792
2013-14	65	355	410	452	515	477	528	509	522	478	488	444	430	429	6,037	2,737	1,509	1,791
2014-15	63	375	387	444	479	519	489	530	508	522	420	477	432	415	5,997	2,693	1,560	1,744
2015-16	68	380	406	428	461	497	526	477	532	503	471	413	469	429	5,992	2,698	1,512	1,782

## Historic Birth Data (MA Department of Public Health)

Maternal Age	1989	1990	1991	1992	1993	1994	1995	1996	1997	1998	1999	2000	2001	2002	2003	2004	2005	2006	2007	2008	2009	2010	2011	2012	2013
10-14 Yrs	0	0	0	0	0	0	0	0	0	0	0	0	0	0	0	0	0	0	0	0	0	0	0	0	0
15-19 Yrs	5	5	6	6	6	0	5	0	0	5	0	0	0	0	0	0	0	0	5	0	0	6	0	0	0
20-24 Yrs	23	27	14	23	12	14	7	12	11	8	7	9	7	8	11	14	13	11	14	9	14	10	0	5	9
25-29 Yrs	89	82	62	98	62	64	76	73	52	54	55	43	41	44	31	33	37	42	50	34	44	34	45	33	28
30-34 Yrs	154	155	135	156	155	167	157	160	169	161	151	138	149	145	146	142	119	99	133	103	106	80	98	107	111
35-39 Yrs	73	77	64	78	81	87	94	107	99	99	117	115	98	121	82	101	96	86	101	96	93	84	62	65	79
40-44 Yrs	16	12	18	11	9	11	23	12	17	25	21	31	19	27	18	17	26	28	19	16	13	13	20	18	18
Total Births	360	358	301	372	326	347	366	368	350	352	354	338	318	349	293	310	292	269	326	262	273	230	231	228	249

# MSBA Enrollment Review – Andover, MA

## Female Population Data

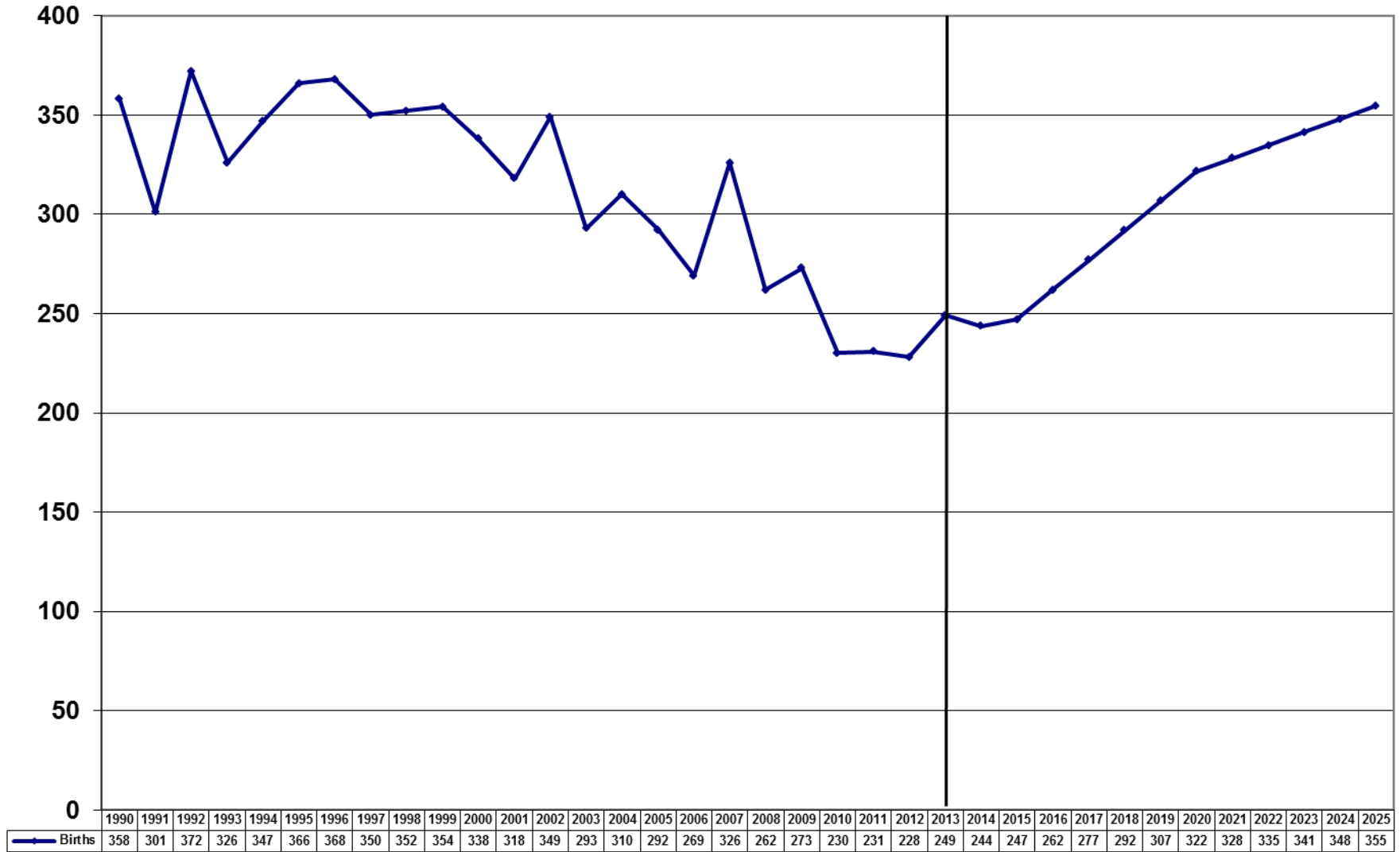
Maternal Age	US Census Data			U Mass Donohue Institute				2011-2013 Avg Fertility Rate
	1990	2000	2010	2015	2020	2025	2030	
10-14 Yrs	987	1,298	1,343	1,328	1,141	1,041	1,348	0.00%
15-19 Yrs	1,057	1,000	1,171	1,069	1,070	925	853	0.00%
20-24 Yrs	867	434	847	835	792	810	705	0.56%
25-29 Yrs	846	570	533	878	857	820	847	5.48%
30-34 Yrs	1,142	943	680	771	1,247	1,195	1,143	14.90%
35-39 Yrs	1,378	1,430	1,088	909	1,014	1,615	1,537	6.88%
40-44 Yrs	1,561	1,641	1,362	1,137	979	1,075	1,698	1.49%
Total Females	15,106	16,197	17,180	17,344	17,872	18,752	19,738	1.37%

## Birth Projections

Maternal Age	2014	2015	2016	2017	2018	2019	2020	2021	2022	2023	2024	2025	2026	2027	2028	2029	2030
10-14 Yrs	0	0	0	0	0	0	0	0	0	0	0	0	0	0	0	0	0
15-19 Yrs	0	0	0	0	0	0	0	0	0	0	0	0	0	0	0	0	0
20-24 Yrs	5	5	5	5	5	4	4	4	4	5	5	5	4	4	4	4	4
25-29 Yrs	44	48	48	48	47	47	47	47	46	46	45	45	45	46	46	46	46
30-34 Yrs	112	115	129	143	157	172	186	184	183	181	180	178	177	175	173	172	170
35-39 Yrs	65	63	64	65	67	68	70	78	86	95	103	111	110	109	108	107	106
40-44 Yrs	18	17	16	16	16	15	15	15	15	15	16	16	18	20	22	23	25
Totals	244	247	262	277	292	307	322	328	335	341	348	355	354	353	353	352	352

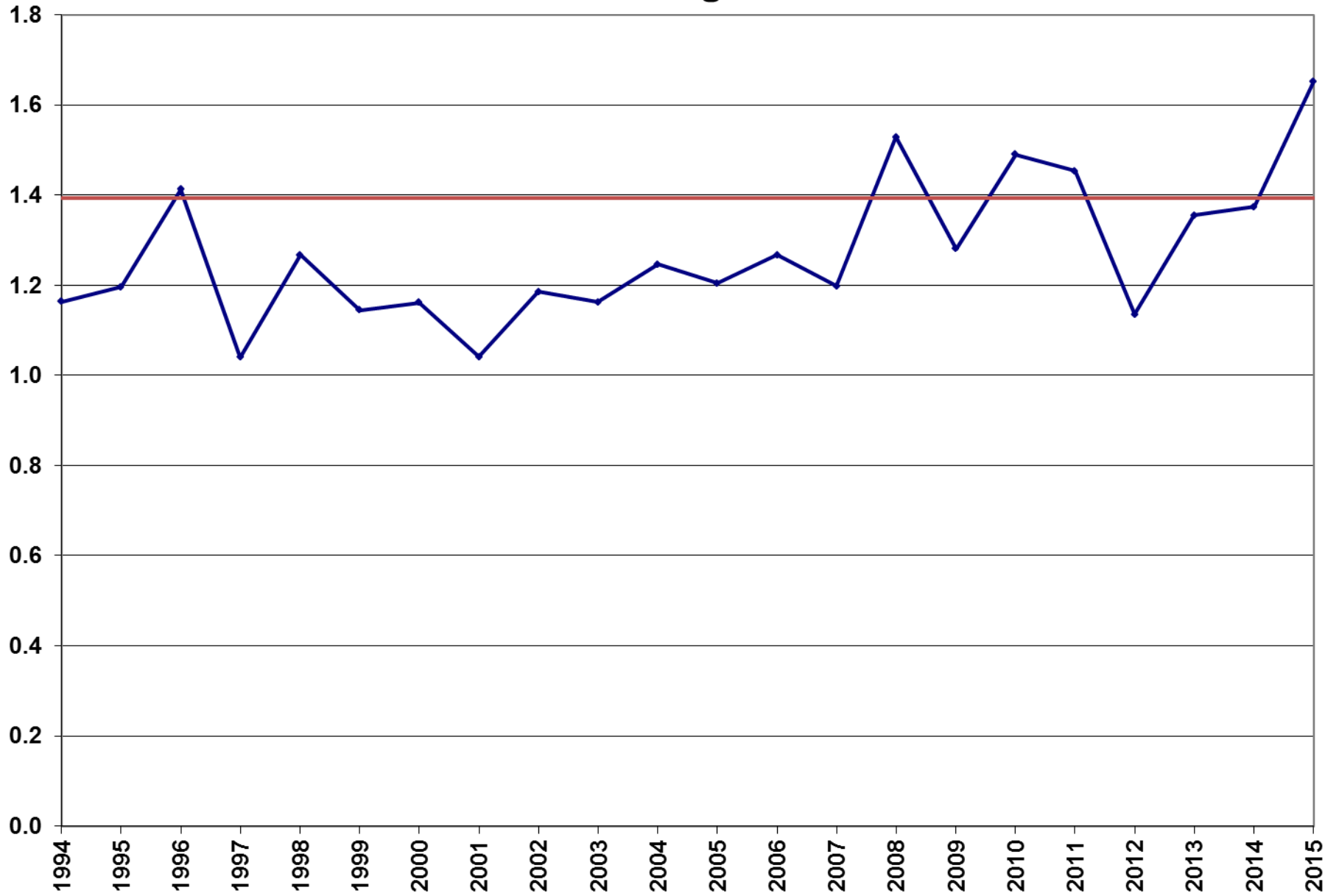
# MSBA Enrollment Review – Andover, MA

## Births



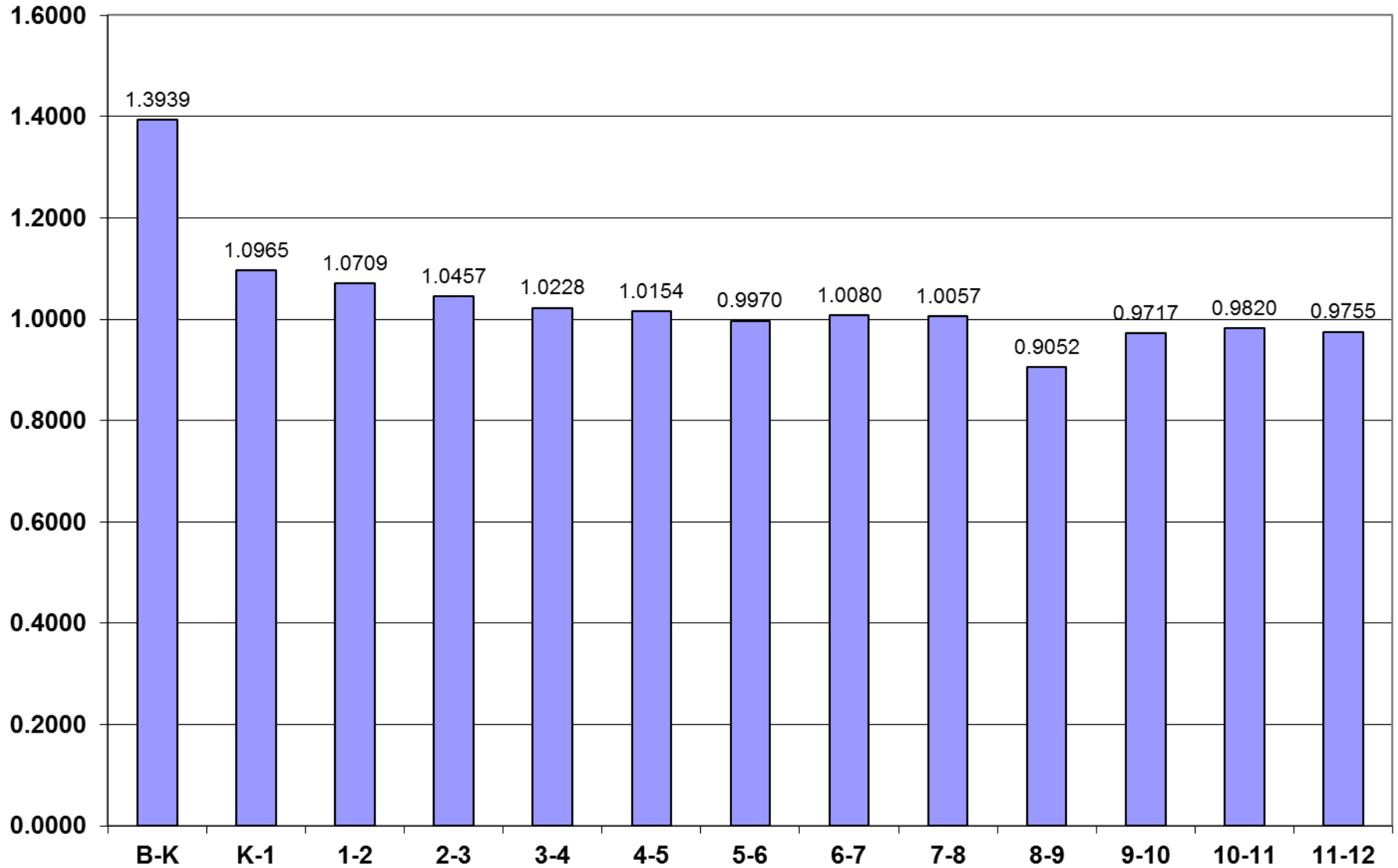
# MSBA Enrollment Review – Andover, MA

## Birth to Kindergarten Ratio



# MSBA Enrollment Review – Andover, MA

## Grade-to-Grade Ratios - 5 Yr Average



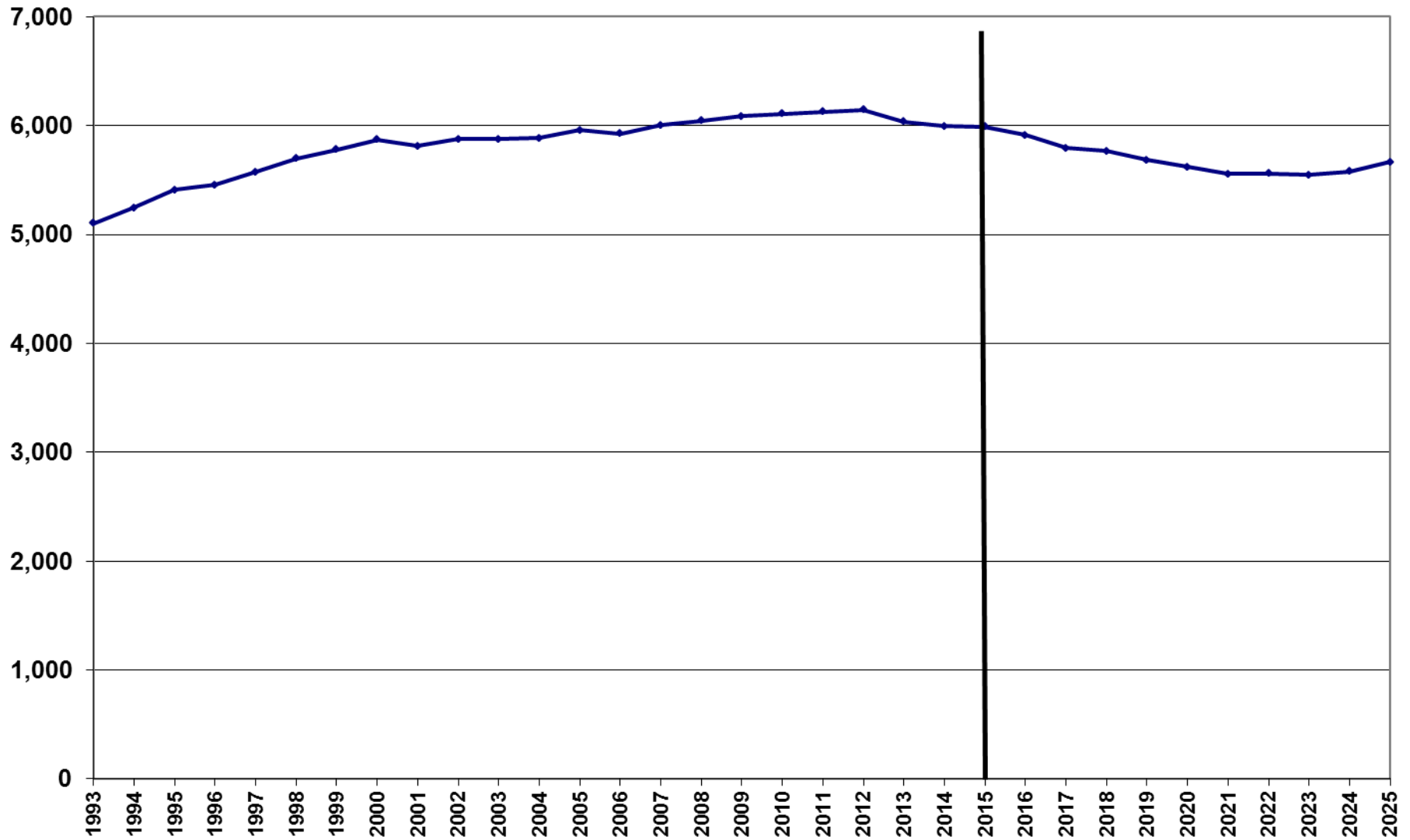
# MSBA Enrollment Review – Andover, MA

## Base Enrollment Projections

YEAR	K	1	2	3	4	5	6	7	8	9	10	11	12	TOTAL	K-5	6-8	9-12
1993	418	430	449	460	455	442	419	397	384	328	355	290	279	5,106	2,654	1,200	1,252
1994	419	464	445	462	463	468	445	425	398	329	319	332	278	5,247	2,721	1,268	1,258
1995	428	460	488	466	473	727	442	416	212	347	320	312	320	5,411	3,042	1,070	1,299
1996	425	473	462	486	463	478	468	458	434	368	338	312	292	5,457	2,787	1,360	1,310
1997	387	458	478	481	501	469	469	473	461	388	359	339	311	5,574	2,774	1,403	1,397
1998	413	446	475	482	504	503	460	469	466	414	385	350	331	5,698	2,823	1,395	1,480
1999	397	460	460	482	487	503	501	471	461	419	407	389	344	5,781	2,789	1,433	1,559
2000	425	422	476	463	486	504	495	504	472	445	395	405	381	5,873	2,776	1,471	1,626
2001	383	458	427	478	468	482	497	514	497	421	407	383	397	5,812	2,696	1,508	1,608
2002	415	435	470	446	489	477	478	507	512	472	386	408	381	5,876	2,732	1,497	1,647
2003	409	425	438	482	461	493	476	478	503	468	464	375	405	5,877	2,708	1,457	1,712
2004	441	436	442	448	480	468	481	478	483	470	444	456	358	5,885	2,715	1,442	1,728
2005	407	475	452	455	467	494	465	484	484	423	469	445	441	5,961	2,750	1,433	1,778
2006	403	423	488	469	474	466	499	469	490	452	410	456	427	5,926	2,723	1,458	1,745
2007	418	453	455	502	485	487	476	519	476	454	446	402	432	6,005	2,800	1,471	1,734
2008	448	447	456	467	507	493	491	494	526	450	443	436	390	6,048	2,818	1,511	1,719
2009	397	464	474	486	469	515	497	492	492	490	441	442	426	6,085	2,805	1,481	1,799
2010	435	426	478	497	493	472	520	507	482	460	470	440	432	6,112	2,801	1,509	1,802
2011	391	467	453	512	507	507	471	523	514	448	450	462	424	6,129	2,837	1,508	1,784
2012	370	441	503	469	528	512	514	479	537	466	433	440	453	6,145	2,823	1,530	1,792
2013	355	410	452	515	477	528	509	522	478	488	444	430	429	6,037	2,737	1,509	1,791
2014	375	387	444	479	519	489	530	508	522	420	477	432	415	5,997	2,693	1,560	1,744
2015	380	406	428	461	497	526	477	532	503	471	413	469	429	5,992	2,698	1,512	1,782
2016	322	417	435	448	471	505	524	481	535	455	458	406	457	5,913	2,598	1,540	1,776
2017	318	353	446	455	458	479	503	529	484	484	442	449	396	5,795	2,509	1,516	1,771
2018	347	348	378	467	465	465	477	507	532	438	471	434	438	5,767	2,470	1,516	1,781
2019	340	381	373	395	477	472	463	481	510	481	425	462	424	5,685	2,438	1,454	1,792
2020	344	373	408	390	404	485	471	467	484	462	468	418	451	5,623	2,404	1,422	1,799
2021	365	378	399	426	399	411	483	474	470	438	449	459	407	5,558	2,378	1,427	1,753
2022	386	400	404	417	436	405	409	487	477	425	426	441	448	5,562	2,448	1,373	1,740
2023	407	423	429	423	427	443	404	413	490	432	413	418	430	5,550	2,552	1,307	1,693
2024	427	446	453	448	433	433	441	407	415	443	420	406	408	5,580	2,640	1,263	1,677
2025	448	469	478	474	459	439	432	445	410	376	431	412	396	5,666	2,767	1,287	1,615
10 yr avg	397	432	463	486	496	500	498	505	502	460	443	441	426	6,048	2,774	1,505	1,769
5 yr avg	374	422	456	487	506	512	500	513	511	459	443	447	430	6,060	2,765	1,521	1,783
2 yr avg	378	397	436	470	508	508	504	520	513	446	445	451	422	5,995	2,696	1,536	1,763
5 yr proj	334	374	408	431	455	481	488	493	509	464	453	434	433	5,757	2,484	1,490	1,784
10 yr proj	370	399	420	434	443	454	461	469	481	443	440	430	425	5,670	2,520	1,411	1,740

# MSBA Enrollment Review – Andover, MA

## Total Enrollment



# MSBA Enrollment Review – Andover, MA

## Enrollment by Grade Group

